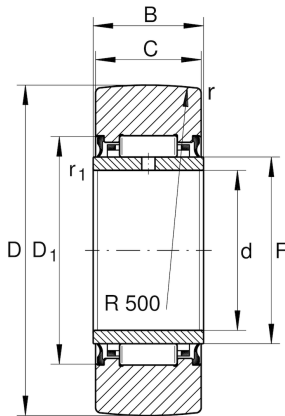
**NA2204-X-2RSR**

Yoke type track roller

Schaeffler ID:  
0007032140000Yoke type track rollers NA22...-2RSR,  
without axial guidance, lip seals on both  
sides

## Technical information

**Main Dimensions & Performance Data**

D	47 mm	Outside diameter
F	25 mm	Raceway diameter inner ring
C	17.8 mm	Width, outer ring
$C_{r w}$	14,000 N	Basic dynamic load rating, radial
$C_{0 r w}$	19,300 N	Basic static load rating, radial
$C_{u r w}$	2,700 N	Fatigue load limit, radial
$n_{D G}$	2,300 1/min	Speed on permanent grease lubrication
	175.53 g	Weight

**Dimensions**

d	20 mm	Bore diameter
B	18 mm	Width, inner ring
$D_{1 \min}$	33 mm	Minimum mounting dimension
$r_{\min}$	1 mm	Minimum chamfer dimension
$r_{1 \min}$	0.3 mm	Minimum chamfer dimension
R	500 mm	Radius of outer ring outside profile